

HIGH PRESSURE HYDRAULIC TOOLS

BBHN SERIES SELF-LOCK HYDRAULIC NUTS

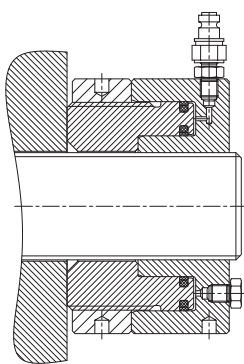
MAX. PRESSURE: 150 MPa

STROKE: 6-20 mm

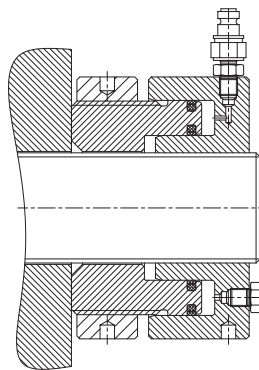


BELIUM BBHN series hydraulic nuts are designed and manufactured for inspection and regular maintenance and need to open the flange connection. Unlike traditional hydraulic bolt tensioners, the BELIUM BBHN series hydraulic nuts are designed to permanently replace the flange with a standard hex nut. Once the hydraulic tensile force is applied to the bolt, the hydraulic tensile force is permanently preserved by the built-in mechanical load ring of the hydraulic nut. Standard series hydraulic nut, the bolt size from M22 to M100, other sizes can be customized.

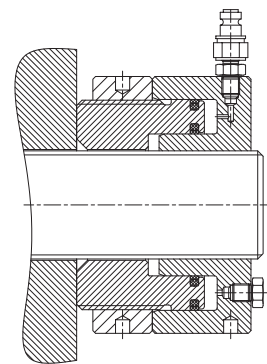
Hydraulic nut working pressure is 1500Bar, with quick connector, suitable for use with BELIUM manual or pneumatic or electric hydraulic bolt tensioner pump.



Screw the hydraulic nut to the upper end of the tightened bolt.

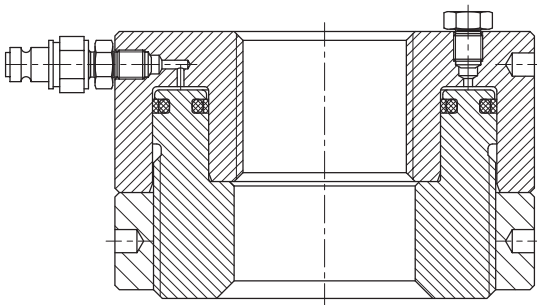


When the piston is jacked up, the bolts are stretched.
The gap is the amount of tension of the bolt.



Screw the locking ring to the nut body, release pressure and work is completed

Model	Thread	Outside Diam.	Max. Tension Force	Effective Area	Thickness	Stroke	Weight
	m	mm	kn	mm ²	mm	mm	kg
BBHN-1	27	75	226	1571	66	6	2.1
	30	75	226	1571	66	6	2.1
	33	83	268	1571	66	6	3.3
BBHN-2	36	90	333	2534	66	8	3.3
	39	95	373	2534	66	8	3.3
BBHN-3	42	101	428	3195	74	8	4.4
	45	105	447	3195	74	8	4.4
	48	113	521	3195	74	8	4.4
	52	122	624	3195	74	10	4.4
BBHN-4	56	136	787	4006	78	10	5.1
BBHN-5	64	150	931	4477	84	10	6.4
BBHN-6	68	160	1046	5635	84	10	8
BBHN-7	72	170	1256	7540	92	15	11.6
	80	192	1667	7540	112	15	11.6
BBHN-8	90	210	2022	10603	112	15	24
	95	220	2177	10603	122	15	24
BBHN-9	100	235	2488	15080	137	20	31
BBHN-10	110	255	2864	16022	137	20	33.6
BBHN-11	125	290	3864	16965	143	20	36.5



Applications:

Under various conditions, high load strong vibration of the mechanical precision and reliable fastening:

- Oil industry: oilfield BOP, oil tree
- Mining: Shearer, Excavator, Bucket Wheel, Super Heavy Vehicle
- Power plant: high pressure feed pump, compressor, rock mill, steam turbine, back wheel
- Petrochemical: reactor, high pressure feed pump, compressor, rock mill, flue gas turbine
- Ship: diesel engine, spindle system, back wheel
- Steel: rolling mill, water press, slab shear, back wheel

Order Description:

- 1, please specify the order when the oil or under the oil, the factory standard for the oiling structure;
- 2, the series of hydraulic nut can be customized specifications are: M22–M600; working pressure: 63–180Mpa;
- 3, the thread form are: ordinary thread, trapezoidal thread and rectangular thread, the user can choose according to need.